

POWER-FAB® CRS-G2

Non-penetrating Flat Roof
Mounting System



-  COMMUNICATIONS
-  ENERGY
-  SPECIAL INDUSTRIES
-  SOLAR

 **POWER-FAB®**
Quality Hardware for the PV Industry



The POWER-FAB® CRS-G2 PV Solar Mounting System



Technical Services Offered:

- Permit ready drawings
- Load calculations from wind tunnel data

The **POWER-FAB® CRS-G2** is a fully ballasted, high strength mounting system designed for the professional installer. Featuring a drastic reduction in total number of parts, the CRS-G2 allows for a quick learning curve and fast assembly. The new improved modular design simplifies roof layout, ordering and installation. Also, compact components allow palletized shipments of material for easy To-The-Roof transport of materials. The CRS-G2 includes integrated grounding to meet new standards, in addition to slotted connections to accommodate roof contours. The new system includes other well known CRS features and benefits and is backed by our dedicated customer service.



PALLETIZED SHIPMENT



Rigid bars set spacing –
no measuring

Ballast pans accept
standard cap blocks

3/8" thick EPDM Base protects
roof and complies with roof
manufacturer requirements

- Top down clamping
- Integrated Ballast Pan, wind deflector and back brackets
- All 1/4" Hardware – Single Tool Assembly
- Modules pivot on front bracket for easier assembly and access
- Integrated grounding complying to UL 467

Installers

Installers demand a racking solution that installs quickly and hassle-free. The POWER-FAB® CRS-G2 features a reduction in components, an intuitive design, and integrated grounding.



End Clamp with self grounding features

Engineers & Architects

Engineers and Architects prefer mounting systems that offer flexibility in design and are fully tested and qualified. The POWER-FAB CRS-G2 is a high strength rack, utilizing an interconnected design that has been wind tunnel tested and complies with current standards.

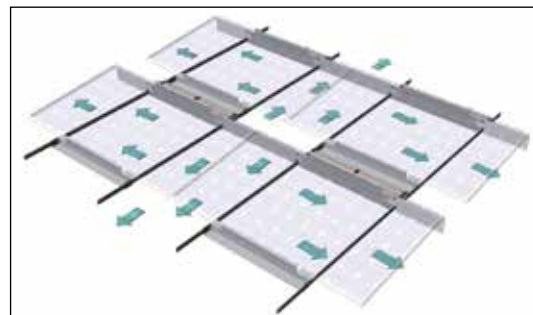


CRS-G2 contours to roof pitches via slotted mounting holes.

System Owners

Owners expect a reliable product that will withstand the environment for the life of the PV System. The POWER-FAB CRS-G2 open air design maximizes energy production and the customer's return on investment.

- Corrosion resistant aluminum components
- EPDM rubber base protects roof surfaces
- No roof penetrations
- Higher strength structure and module clamping



Open design for increased water drainage



The POWER-FAB® CRS-G2 is adaptable to any roof layout.

Standard Product Wind/Roof Loading Specifications			
Wind Load	Standard Tilt Angle**	Roof Loading	Category
120 mph	10 degree	< 6 lbs./ft ²	Exposure C
130 mph	5 degree	< 6 lbs./ft ²	Exposure C

Wind tunnel data used to calculate ballast weights along with ASCE 07-10 and building code requirements.

**5 & 10 degree tilt angles only



4000-B Vassar Drive NE
Albuquerque, New Mexico 87107
USA

Telephone: 800.260.3792
Fax: 505.881.0933
Web Site: www.DPWSolar.com
E-mail: info@power-fab.com

© 2012 Preformed Line Products
Printed in U.S.A.
SL-SS-1111-1
11.12.2M

DPW Solar's engineering staff is available to assist with your next project. Please complete a POWER-FAB CRS Request For Quote form found at www.DPWSolar.com under the product information section and forward to our technical support group.

Preformed Line Products
(Canada) Limited
1711 Bishop St. E
Cambridge, ON N1T 1N5

Telephone: 519-740-6666
Fax: 519-740-7917
Web site: www.preformed.on.ca
Email: sales@preformed.on.ca